

A full-length portrait of a young man with short dark hair, looking directly at the camera. He is wearing a maroon tuxedo jacket over a matching vest and trousers. Underneath, he wears a white dress shirt with a white bow tie. A white pocket square is tucked into the breast pocket of the jacket. The background is a grey, textured wall with vertical lines and small circular indentations.

# Tuxedo Avenue

FORMAL  WEAR

[WWW.TUXEDOAVENUE.COM](http://WWW.TUXEDOAVENUE.COM)

VOLUME: XIX EDITION 4.0

**IKE EVENING**  
BY IKE BEHAR

WHITE WAVERLY

*Ordering Information on Page 29*







## *Mix* *Match Colors*

Our experts will work with you to find the right color for your groomsmen. Tuxedo Avenue can match any dress designer's color so you can be confident that your wedding party will match to perfection.

We also encourage you to be as creative as you wish. Our flexibility and expertise allows us to find the right amount of color from the pocket squares to the ties and vests.

ALLURE MEN  
BY JEAN YVES

BLACK EVENING  
TUXEDO

*Ordering Info on Page 44*





**KENNETH COLE**

KENNETH COLE BURGUNDY HAYWOOD

*Ordering Info on Page 16*



Your wedding is more than a special day or celebration. It marks the beginning of a new chapter in your life. One built around love and commitment.

That is why we are dedicated to providing your groom with the style, color and fit that will have him looking and feeling like the hero he is.

**Tuxedo Avenue**  
FORMAL  WEAR

I K E B E H A R

NAVY COLLIN SUIT

Coat: 8561C

Pant: 8545P

*Ordering Info on Pages 32 & 34*

**Mix**  **Match Colors**







MICHAEL KORS

Once upon a time, grooms were bound by strict etiquette when it came to their formal wear; cutaways in the daytime, black or white at night. While there is something to be said for tradition, we don't believe you should feel bound by such rules as you decide on your wedding formal wear. In fact, we want to empower you to follow your heart and select the style that speaks to your personality as a couple.

Regardless of the style you select, we are excited and honored to work with you to make your dream wedding a reality.

*Ordering Info on Page 18*

**Tuxedo Avenue**  
FORMAL WEAR



MICHAEL KORS

DESIRE TUXEDO

*Ordering Info on Page 26*



*Jean Yves*

MODERN ESSENTIALS  
2 BUTTON NOTCH

*Ordering Info on Page 35*





## FATHER & *Daughter*

There are few things that are more important to a father than walking his daughter down the aisle. It is important to us to make sure he looks like a gentlemen doing it. You will be amazed at how great he looks when you finally get him out of his favorite Sunday football jersey and into one of our stylish tuxedos.

*Ordering Info on Page 19*

**Tuxedo Avenue**  
FORMAL  WEAR

**IKE EVENING**  
BY IKE BEHAR

NAVY SEBASTIAN



MICHAEL KORS

HEATHER GREY CHROME  
MODERN FIT

*Ordering Info on Page 21*

**IKE EVENING**  
BY IKE BEHAR

**BLACK CHECK ASHTON**

*Ordering Info on Page 20*





# NEIL ALLYN

AIDEN ONE BUTTON NOTCH

Coat: 5201

Pant: 10167  
BLACK SLIM FIT

Swatch: #8

**ULTRA SLIM FIT**  
*Diamond Collection*

**Tuxedo Avenue**  
FORMAL  WEAR



**KENNETH COLE**

HEATHER GREY BEDFORD

Coat: 9845C

Pant: 9845P

Vest: 9845V

Swatch: #18

**SLIM FIT**

*Diamond Collection*

**Tuxedo Avenue**  
FORMAL WEAR





**KENNETH COLE**

BURGUNDY HAYWOOD

Coat: 9600C

Pant: 9600P

Vest: 9600V

Swatch: #19

**SLIM FIT**

*Diamond Collection*

**Tuxedo Avenue**  
FORMAL  WEAR



**IKE EVENING**  
BY IKE BEHAR

LANE IN DUSK BLUE

Coat: 8563C

Pant: 8563P

Vest: 8563V

Swatch: #17

**SLIM FIT**

*Diamond Collection*

**Tuxedo Avenue**  
FORMAL WEAR



MICHAEL KORS  
MEDIUM GREY AFFECTION



Coat: MK101  
Pant: MK101P  
Vest: MK101V  
Swatch: #16

**MODERN FIT**  
*Diamond Collection*

**Tuxedo Avenue**  
FORMAL WEAR



**IKE EVENING**  
BY IKE BEHAR

NAVY SEBASTIAN

Coat: 8560C

Pant: 8560P

Vest: 8560V

Swatch: #12

**SLIM FIT**

*Diamond Collection*

**Tuxedo Avenue**  
FORMAL WEAR

**IKE EVENING**  
BY IKE BEHAR

BLACK CHECK ASHTON

Coat: 8562C

Pant: 8562P

Vest: 8562V

Swatch: #6

**SLIM FIT**

*Diamond Collection*

**Tuxedo Avenue**  
FORMAL WEAR

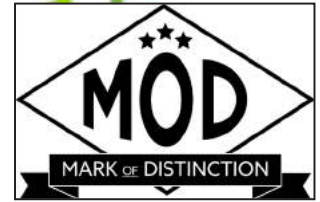


**MICHAEL KORS**  
HEATHER GREY CHROME

Coat: CHROME  
Pant: CHROME P  
Vest: CHROME V  
Swatch: #3

**MODERN FIT**  
*Diamond Collection*

**Tuxedo Avenue**  
FORMAL WEAR



AIRES PAISLEY - PLATINUM

Coat: 402C

Pant: 10167  
BLACK SLIM FIT

Swatch: #22

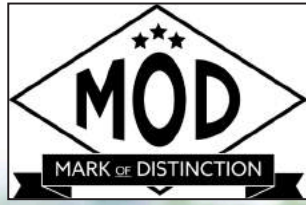
Long Tie: WPY402

Bow Tie: BPY402

**SLIM FIT**

*Diamond Collection*

**Tuxedo Avenue**  
FORMAL WEAR



AIRES PAISLEY - COBALT



Coat: 404C

Pant: 10167

BLACK SLIM FIT

Swatch: #20

Long Tie: WPY404

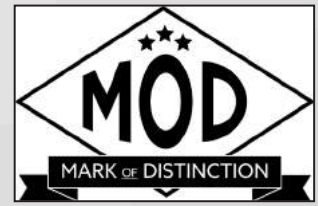
Bow Tie: BPY404

**SLIM FIT**

*Diamond Collection*

**Tuxedo Avenue**  
FORMAL WEAR





AIRES PAISLEY - APPLE



Coat: 263C

Pant: 10167

BLACK SLIM FIT

Swatch: #21

Long Tie: WPY463

Bow Tie: BPY463

**SLIM FIT**

*Diamond Collection*

**Tuxedo Avenue**  
FORMAL WEAR

ALLURE MEN  
BY JEAN YVES

STEEL GREY  
EVENING COAT

Coat: 10257

Pant: 10257P

Vest: 10257V

Swatch: #13

**MODERN FIT**

*Diamond Collection*

**Tuxedo Avenue**  
FORMAL WEAR



**MICHAEL KORS**

DESIRE TUXEDO

Coat: DESIRE

Pant: DESIREP

Vest: DESIREV

Swatch: #1

**MODERN FIT**

*Diamond Collection*

**Tuxedo Avenue**  
FORMAL WEAR

A man with short brown hair and a light beard is wearing a dark navy blue tuxedo jacket over a white dress shirt and a black bow tie. He is looking directly at the camera with a slight smile. The background is a bright, out-of-focus window.

*Jean Yves*

FRANK SHAWL  
COLLAR

Coat: 10536

Pant: 10019

Swatch: #8

**MODERN FIT**

*Gold Collection*

**Tuxedo Avenue**  
FORMAL WEAR



ALLURE MEN  
BY JEAN YVES

BLACK DARCY

Coat: 10303

Pant: 10329P

Coat Swatch: #2

Pant Swatch: #15

**MODERN FIT**

*Diamond Collection*

**Tuxedo Avenue**  
FORMAL  WEAR

A man and a woman are posing in formal attire. The man is wearing a white tuxedo jacket with black lapels, a white shirt, and a black tie. The woman is wearing a white lace two-piece dress. They are standing in front of a large, colorful, vintage-style sign that says "Coca-Cola".

**IKE EVENING**  
BY IKE BEHAR

WHITE WAVERLY

Coat: 8261C

Pant: 10167  
BLACK SILK FIT

Swatch: #7

**SLIM FIT**

*Diamond Collection*

**Tuxedo Avenue**  
FORMAL WEAR



# *Grooming the Groom*

## *What's right for Mr. Right?*

You love him in his boxers and favorite T-shirt but this is your big day. It is time for him to make a big statement.

After all you will be dressed to nines and stunningly beautiful. He should be too.

That means indulging in a little product taming his hair and splashing on a little scent. Give him the look you are after. The kind that makes you the envy of every woman at the ceremony.

ALLURE MEN  
BY JEAN YVES

## ALLURE TAN FORMAL SUIT

Coat: 10258

Pant: 10258P

Vest: 10258V

Swatch: #4

**MODERN FIT**

*Diamond Collection*

**Tuxedo Avenue**  
FORMAL WEAR

**IKE EVENING**  
BY IKE BEHAR

NAVY COLLIN SUIT

Coat: 8561C

Pant: 8560P

Vest: 8560V

Swatch: #12

**SLIM FIT**

*Gold Collection*

**Tuxedo Avenue**  
FORMAL WEAR





**Mix** Match Colors

Coat: 8561C  
Pant: CHROME P  
Coat Swatch: #12  
Pant Swatch: #3

**SLIM FIT**  
Gold Collection

**Tuxedo Avenue**  
FORMAL WEAR



**IKE EVENING**  
BY IKE BEHAR

NAVY COLLIN SUIT

Coat: 8561C  
Pant: 8560P  
Vest: 8560V  
Swatch: #12

**SLIM FIT**  
Gold Collection

**Tuxedo Avenue**  
FORMAL WEAR



**IKE EVENING**  
BY IKE BEHAR

LIAM TAN SUIT

Coat: 8545C  
Pant: 8545P  
Vest: 8545V  
Swatch: #10

**SLIM FIT**  
*Gold Collection*

**Tuxedo Avenue**  
FORMAL WEAR

**Mix** Match Colors

Coat: 8561C  
Pant: 8545P  
Coat Swatch: #12  
Pant Swatch: #10

**SLIM FIT**  
*Gold Collection*

**Tuxedo Avenue**  
FORMAL WEAR

**IKE EVENING**  
BY IKE BEHAR

Coat: 8545C  
Pant: 8560P  
Coat Swatch: #10  
Pant Swatch: #12

**SLIM FIT**  
*Gold Collection*

**Tuxedo Avenue**  
FORMAL WEAR



*Jean Yves*

MODERN ESSENTIALS  
TWO BUTTON NOTCH

Coat: 10115

Pant: 10019

Swatch: #8

**MODERN FIT**

*Platinum Collection*

**Tuxedo Avenue**  
FORMAL  WEAR



*Jean Gues*

MODERN ESSENTIALS  
TWO BUTTON NOTCH

Coat: 10116  
Pant: 10020  
Swatch: #7

**MODERN FIT**  
*Platinum Collection*

**Tuxedo Avenue**  
FORMAL WEAR



ALLURE MEN  
BY JEAN YVES

CEMENT BARTLETT SUIT

Coat: 10329

Pant: 10329P

Vest: 10329V (NOT SHOWN)

Swatch: #15

**MODERN FIT**

*Diamond Collection*

**Tuxedo Avenue**  
FORMAL WEAR

A man with short brown hair and blue eyes is wearing a dark grey tuxedo jacket, a matching vest, and a white dress shirt with a light blue bow tie. He is standing in front of a white background with vertical lines, possibly a window or a wall. The lighting is soft and even.

*Jean Yves*

STEEL GREY TWILIGHT

Coat: 10098

Pant: 10257P

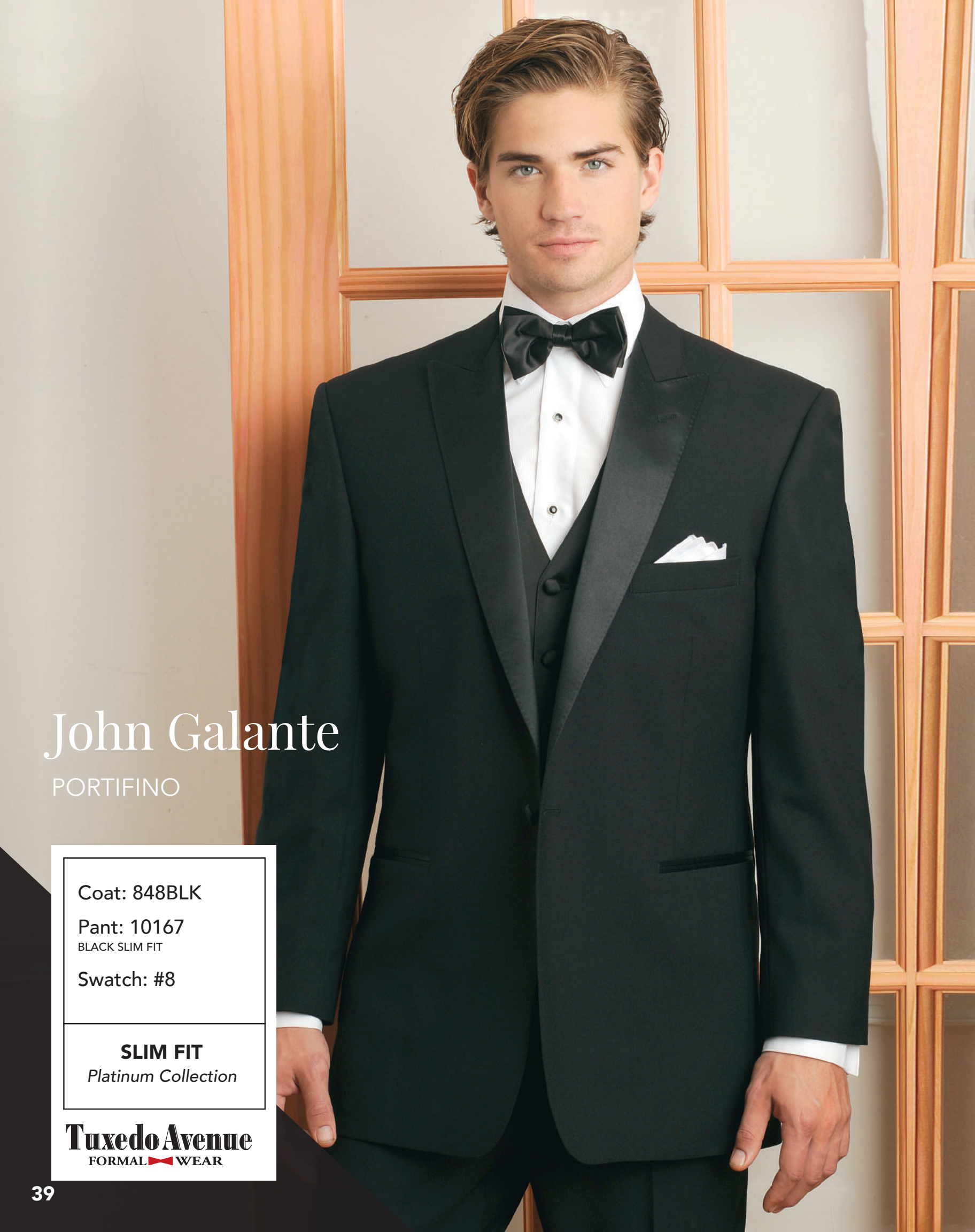
Vest: 10257V

Swatch: #13

**MODERN FIT**

*Gold Collection*

**Tuxedo Avenue**  
FORMAL WEAR



# John Galante

PORTIFINO

Coat: 848BLK

Pant: 10167  
BLACK SLIM FIT

Swatch: #8

**SLIM FIT**

*Platinum Collection*

**Tuxedo Avenue**  
FORMAL  WEAR



A man with dark hair and light eyes, wearing a brown tuxedo jacket, a white shirt, a dark striped tie, and a boutonniere. He is standing against a dark background with a subtle blue light effect on the left side.

# *A Well Dressed Man Isn't Hard to Find*

You won't have to look very far to find your well dressed man on your wedding day. We will make sure you find the perfect style for your groom and his groomsmen.

We combine the latest styles with years of tailoring experience to have your groom looking his very best. We can fit all body types so that everyone looks and feels their best.

AFTER  
**SIX.**

SUMMIT IN MOHOGANY BROWN

Coat: 380SU

Pant: 380P

Vest: VIREX

Swatch: #5

**CLASSIC FIT**

*Platinum Collection*

**Tuxedo Avenue**  
FORMAL WEAR

# LORD WEST

WIMBLEDON CLASSIC CUTAWAY

Coat: FWCT

Pant: 425P

**CLASSIC FIT**  
*Gold Collection*

**Tuxedo Avenue**  
FORMAL  WEAR

AFTER  
**SIX.**

SAN DOMINICO FULL  
DRESS TAIL COAT

Coat: 722TCNA

Swatch: #8

**CLASSIC FIT**

*Silver Collection*

**Tuxedo Avenue**  
FORMAL WEAR

WHITE TAILCOAT

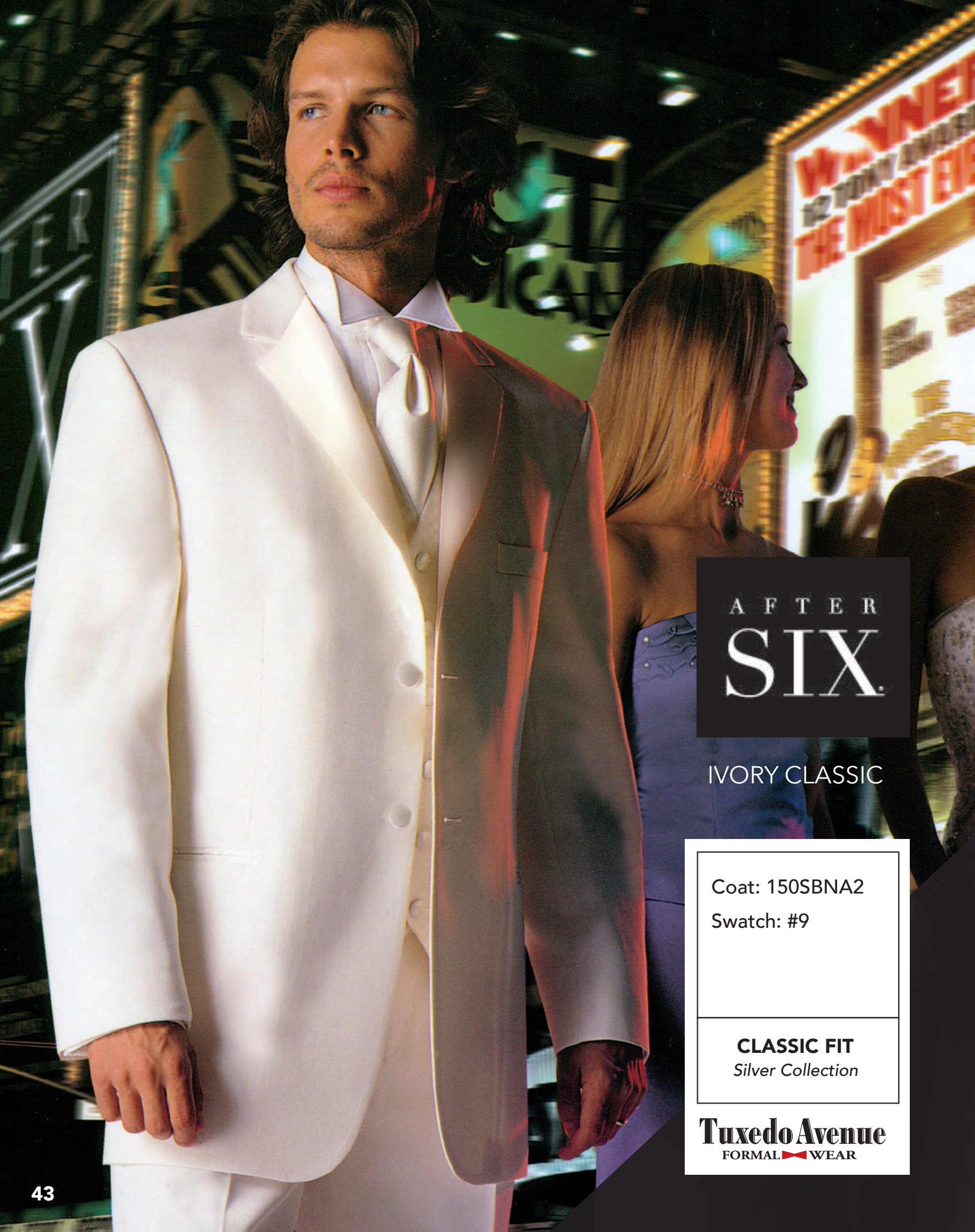
Coat: 100TCNA

Swatch: #7

**CLASSIC FIT**

*Silver Collection*

**Tuxedo Avenue**  
FORMAL WEAR



AFTER  
**SIX.**

IVORY CLASSIC

Coat: 150SBNA2

Swatch: #9

**CLASSIC FIT**

*Silver Collection*

**Tuxedo Avenue**  
FORMAL WEAR

ALLURE MEN  
BY JEAN YVES

BLACK EVENING TUXEDO

Coat: 10256

Pant: 10019

Vest: 10256V

Swatch: #2

**SLIM FIT**

*Diamond Collection*

**Tuxedo Avenue**  
FORMAL  WEAR



# *Simply Solid*



Vest & Tie Collection

*See Tuxedo Avenue Swatch Book for selection.*

Over 60 colors including Vests, Bow Ties, Double Ombre Bow ties, Double Ombre Long Ties, Plaid Bow Ties, Plaid Long Ties, Plaid or Solid Suspenders, Plaid and Solid Pocket Squares and much more.

**NEW THIS YEAR!**

*24 complimenting colors in Paisley bowties, long ties, and pocket squares.*

# *Tweed*



## Vest & Tie Collection

*See Tuxedo Avenue Swatch Book for selection.*

Select from several sophisticated Tweed patterns with a Plaid Bow or Plaid Long Tie. Skinny Ties available in black satin only.

Skinny Tie Style: #WS401



# *Allure Accessories*



Cummerbunds, Bow Ties  
& Pocket Squares

*See Tuxedo Avenue Swatch Book for  
selection.*







*Synergy*

—  —  
Vest & Tie Collection

*See Tuxedo Avenue Swatch Book for selection.*

23 Colors: Vests, Patterned Bow Ties, Solid Long Ties, Diamond Long Ties and Solid Pocket Squares.



*Devon*



Vest & Tie Collection

*See Tuxedo Avenue Swatch Book for selection.*

18 Colors: Vests, Patterned Bow Ties, Solid Long Ties, Solid Suspenders, Solid Pocket Squares.



*Sterling*



Vest & Tie Collection

*See Tuxedo Avenue Swatch Book for selection.*

29 Colors: Vests, Solid Bow Ties, Solid Long Ties, Striped Long Ties, Solid Pocket Squares.



*Allure*

—  —  
Vest & Tie Collection

*See Tuxedo Avenue Swatch Book for selection.*

15 Colors: Vests, Solid Bow Ties, Solid Long Ties, Stripe Long Ties, Solid Pocket Squares.



# Lido

---



---

## Vest & Tie Collection

*See Tuxedo Avenue Swatch Book for selection.*

25 Colors: Vests, Solid Bow Ties, Solid Long Ties, Paisley Long Ties, Solid Pocket Squares.

# Newport

Vest Collection



**Tuxedo Avenue**  
FORMAL WEAR

# Arch Angel

Vest Collection



VEST FRONT



# *Mossy Oak*

Vest & Tie Collection

*See Tuxedo Avenue Swatch Book for selection.*

Selection of Vests, Bow Ties, Long Ties, Suspenders and Pocket Squares.



# *The Perfect Fit*



Our fitted shirts feature a 3-part "Tru-Fit" design.

1. We taper from chest to waist.
2. We taper from shoulder to elbow.
3. We taper from elbow to wrist.







*The Perfect Spread Collar*



*Colors By Formal Shirts*



*In an expanded color palette.*

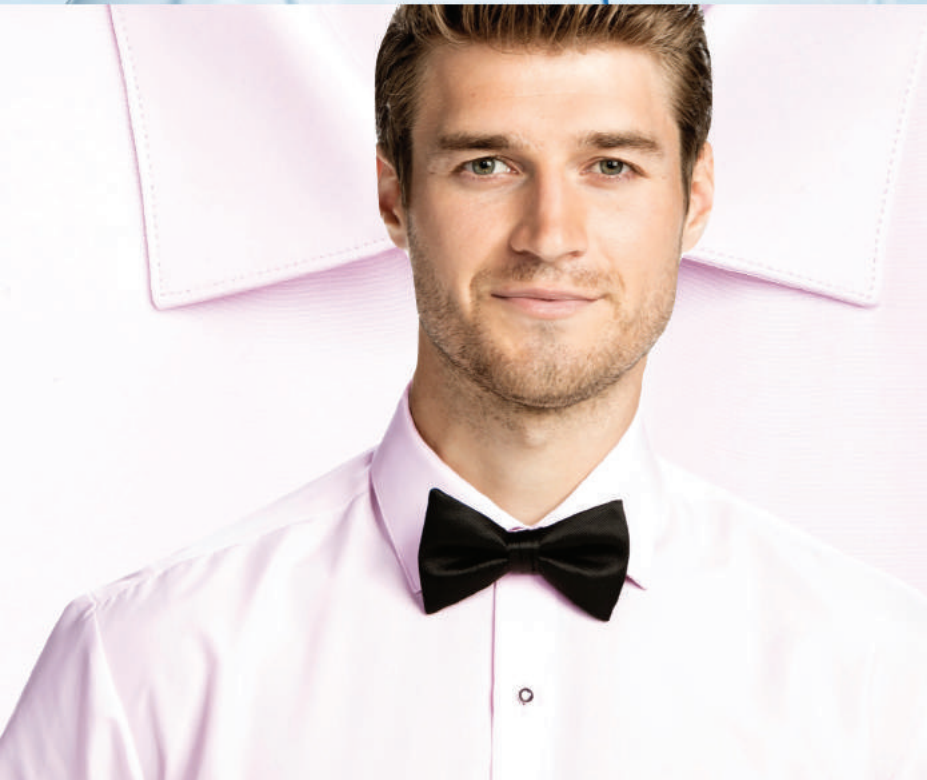
**PINK | BLUE | LILAC**

*Fitted shirts with the Perfect Spread Collar and the New Fashion Cuff. Made of 100% Luxe Microfiber.*

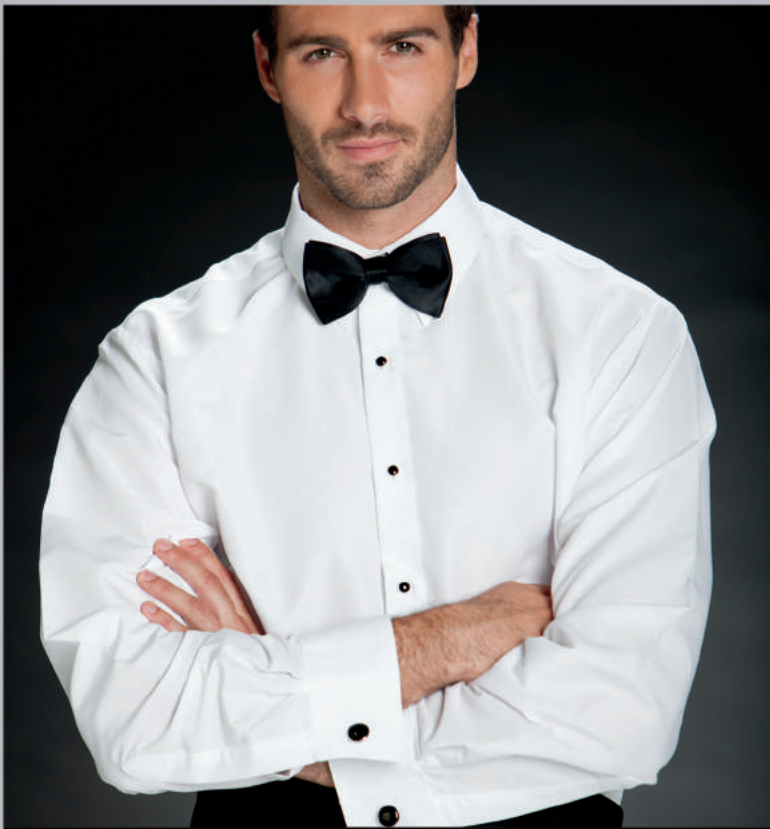
To Order: PINK - M29

BLUE - M30

LILAC - M31



*The New Fashion Cuff*



**MICROFIBER SHIRTS**

Laydown Collar - Plain Front  
AVAILABLE IN: White, Black, Ivory  
ORDER #: M12 (white), M14 (black), M16 (ivory)



**FITTED MICROFIBER**

Laydown Collar - Plain Front  
AVAILABLE IN: White, Ivory, Black  
ORDER #: M20 (white), M21 (ivory), M22 (black)



**FITTED PLEATED MICROFIBER**

Laydown Collar - 1/4" Pleated Front  
AVAILABLE IN: White, Ivory  
ORDER #: M23 (white), M24 (ivory)



**PLEATED MICROFIBER**

Wing Collar - 1/4" Pleated Front  
AVAILABLE IN: White, Ivory  
ORDER #: M11 (white), M18 (ivory)



**PLAIN FRONT MICROFIBER**

Wing Collar - Plain Front  
AVAILABLE IN: White, Ivory  
ORDER #: M25 (white), M26 (ivory)



FITTED  
SPREAD COLLAR

Allure Men

**SWISS PLEATED MICROFIBER**

Spread Collar - Swiss Pleated Front  
AVAILABLE IN: White, Ivory  
ORDER #: M27 (white), M28 (ivory)



**BASIC PLEATED WING**

Wing Collar - 1/4" Pleated Front  
AVAILABLE IN: White, Ivory  
ORDER #: WWP (white), IWP (ivory)



**BASIC PLEATED LAYDOWN**

Laydown Collar - 1/4" Pleated Front  
AVAILABLE IN: White  
ORDER #: WLP (white)



**LAYDOWN PLEATED MICROFIBER**

Laydown Collar - 1/4" Pleated Front  
AVAILABLE IN: White, Ivory  
ORDER #: M10 (white), M19 (ivory)

TAN MASON

To Order: AL01



BLACK MASON

To Order: AL05





**LIGHT GREY MASON**

*To Order: AL04*



**DARK GREY MASON**

*To Order: AL06*

**BLACK SLIP ON**

*To Order: AL07*



**BASIC BLACK LACE UP**

*To Order: BLSH*



**BLACK GEORGE BOOT**

*To Order: AL02*



**BASIC IVORY LACE UP**

*To Order: ILSH*



**PRESLEY**

*To Order: AL03*



**BASIC WHITE LACE UP**

*To Order: WLSH*





# *Tuxedo Trousers*

PLAIN FRONT TROUSER  
WITH BEADED SIDE TRIM

*Available In: Black, White and Ivory*

To Order: BLACK - 10019

WHITE - 10020

IVORY - 10021

# *Tuxedo Trousers*



## **BLACK SLIM FIT TROUSER**

By *JEAN YVES*

Available in *BLACK*

To Order: 10167

## **DOUBLE PLEATED TROUSER**

(Not Shown) By *Neil Allyn*

Available in *BLACK, WHITE, IVORY*

To Order: *BLACK -BP01*

*WHITE - WP01*

*IVORY - IP01*

## **FLAT FRONT TROUSER WITH SATIN STRIPE**

By *NEIL ALLYN*

Available in *BLACK*

To Order: 3533P



# Measurements

## SHIRT MEASUREMENT GUIDE



**NECK:** Place tape around neck at the level where the shirt collar would button. With two fingers under the tape (index and middle fingers together) determine neck size. Take mental note of the measurement. Do not pull the tape too tight and be sure the customer is comfortable.



**SHIRT SLEEVE LENGTH:** Starting the tape just below the back of the neck at the center of the spine, place the tape over the shoulder and then down the arm over the elbow to a point of approximately 1" past the wrist bone. Always measure longer rather than short, since the sleeve button and/or cuff link will prevent the sleeve from being too long. Remember, our shirts end on the odd length only.



## COAT AND PANT MEASUREMENT GUIDE



**CHEST MEASUREMENT:** Ask the gentlemen being measured to raise his arms outward to the side while you place the measuring tape under his arms, over the back shoulder blades, and over the broadest part of the chest. The gentlemen may then relax his arms while you hold the tape snug with two fingers under the tape.



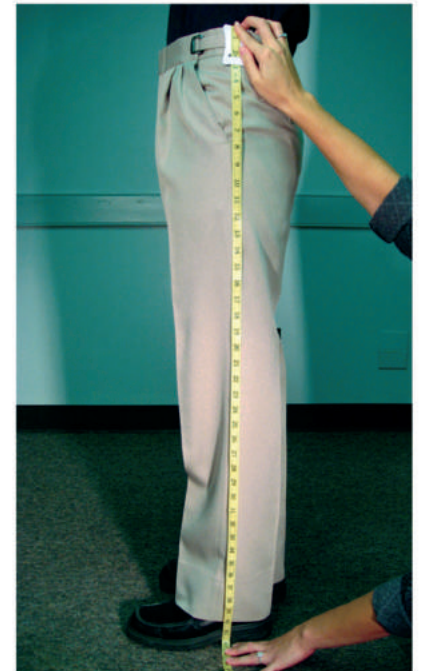
**OVERARM MEASUREMENT:** Ask the gentlemen to keep his arms down at his side while you place the measuring tape exactly in the same place as the chest measurement you just took, but include the arms in this measurement.



**WAIST MEASUREMENT:** Place the tape around the gentlemen's waist just below the navel. This is the height at which formal trousers are worn. Make sure tape is snug and ask customer if this is comfortable for him. Asking the customer what trouser size he wears may confirm the waist size for you (unless the customer usually wears the waist very low).



**HIP MEASUREMENT:** Place tape around the broadest part of the customer's hip. Make sure the tape is snug and over the widest part of the backside. Refer to trouser chart on next page for maximum hip per waist.



**OUTSEAM MEASURING:** With the customer standing straight, looking forward and legs slightly apart, place the start of the tape at the side of the waist level with the navel. Straighten the tape down the outside of the leg until you reach the bottom of the outside ankle bone. This is the correct outseam measurement to record. If the customer is wearing a dress shoe, measure to the top of the heel and deduct 1 1/2".



# COAT SIZE CHART

**INSTRUCTIONS:** Measurement theory dictates that in determining coat size, one must fit and focus on the largest part of the body. The coat size matrix is three parts:

- *UPPER BODY* is diagnosed with chest and overarm measurements
- *MID BODY* is fitted with the waist measurement
- *LOWER BODY* is ascertained through the hip measurement

Use the chart to assist in determining coat size. The chart is one aspect of the process. Keep in mind that product knowledge and trying on a coat truly aid in the finalization of a coat size.

Coat	Weight (pounds)	Chest (inches)	Overarm (inches)	Waist (inches)	Hips (inches)
34	125	32-34	39-41	27-28	32-34
35	125-130	33-35	40-42	27-29	33-35
36	135-140	34-36	41-43	27-30	34-36
37	140-150	35-37	42-44	28-31	35-37
38	150-160	36-38	43-45	29-32	36-38
39	160-170	37-39	44-46	30-33	37-39
40	170-175	38-40	45-47	31-34	38-40
41	175-185	39-41	46-48	32-35	39-41
42	185-190	40-42	47-49	33-36	40-42
43	190-200	41-43	48-50	34-37	41-43
44	200-215	42-44	49-51	35-38	42-44
46	215-220	44-46	51-53	37-41	44-46
48	220-240	46-48	53-55	39-43	46-48
50	240-260	48-50	54-57	42-46	48-50
52	260-275	50-52	56-59	44-48	50-52
54	275-290	52-54	58-61	46-50	52-54
56	290-300	54-56	60-63	48-52	54-56
58	300-310	56-58	63-65	50-54	56-58
60	310-320	58-60	64-67	53-57	58-60
62	330	60-62	66-69	54-59	60-62
64	340	62-64	68-71	57-61	62-64
66	350	64-66	69-73	58-63	64-66

# BOY'S COAT SIZE CHART

Coat	Weight (pounds)	Height (inches)	Chest (inches)	Coat Insleeve	Waist (inches)	Pant (outseam)	Neck (inches)	Shirt Sleeve
3	31-55	36-38	22½	7½ - 8	18/20	20-22	10-10½	19½
4	35-39	38-42	23	8 - 8½	20-21	21-23	10-10½	19½
6	45-52	43-47	25	9½-10½	22-23	23-26	11-11½	23½
8	53-63	48-51	26½	11½-12	24-25	26-28	11-11½	23½
10	64-76	52-55	28	12½-13	25-26	29-31	12-12½	27½
12	77-89	53-57	29¼	13½-14	26-27	32-35	12-12½	27½
14	90-103	59-61	31½	14½-15	27-28	35-38	13-13½	31½
16	104-115	62-64	33	15½-16	28-29	38-40	13-13½	31½
18	115-125	65-68	34½	16-16½	28-30	40-42	13½-14	31½

**Please Note:** There is only one sleeve length per neck size for boys shirts. See above.

Boys pants will adjust for only two sizes in the following ranges: 18-19, 20-21, 22-23, 24-25, 26-27 & 28-29.

If the boy's measurements are smaller than those for tuxedo size 3, consider buying one of our Infant Tuxedos.

Boys shoes are available in whole sizes only.

S  
I  
Z  
E  
C  
H  
A  
R  
T  
S

## COAT LENGTH CHART

COAT LENGTH	HEIGHT	INSLEEVE	SHIRT SLEEVE	TROUSER OUTSEAM
Short	5'7" or less	16	30-32	37-39½
Regular	5'8" - 5'10"	17	33-34	40-42
Long	5'10"-6'1"	18	35-36	42½-44½
X-Long	6'2"+	19	37-38	45 +

## TROUSER CHART

TROUSER SIZE	PLEATED MAX HIP	TRIM MAX HIP	SKINNY MAX HIP
27-28-29	40	37	36
30-31-32	42	39	38
33-34-35	46	41	40
36-37-38	48	44	43
39-40-41	50	48	46
42-43-44	53	51	-
45-46-47	56	54	-
48-49-50	58	56	-
51-52-53	61	60	-
54-55-56	64	62	-
57-58-59	65 ½	65	-

## FULL BACK VEST SIZING CHART

Coat Size	VEST Size	Waist Range
34 to 38	S	27" to 32"
39 to 42	M	33" to 36"
43 to 44	L	37" to 41"
46 to 50	XL	42" to 46"
50 to 54	2X	47" to 50"
56 to 58	3X	51" to 56"
60 to 70	4X (open back)	57" to 65"

## BOY'S VEST SIZING CHART

Coat Size	Backless Vest Size
3 to 6	BS
8 to 12	BM
14 to 18	BL

## NECK / SHIRT CHART

MEN'S NECK	SHIRT	MAX WAIST
13-13½	XS	40
14-14½	S	44
15-15½	M	48
16-16½	L	54
17-17½	XL	58
18-18½	2X	62
19-20	3X	66
21-22	4X	70
23-24	5X	72
25-26	6X	

BOY'S NECK	SHIRT
10-10½	BX
11-11½	BS
12-12½	BM
13-13½	BL

### TIPS ON MEASURING BOYS

When measuring boys, make sure you have all the sizes recorded including height, weight, as these are as important as chest and waist. Also ask the age of the child. It often corresponds to the coat size. The *Boys Coat Size Chart* may help in approximating coat size. If the boy's waist is the only measurement that would require a larger tuxedo size than the rest of the measurements, consider Style #195 in a Husky Fit.



### CLASSIC FIT

The Classic Fit covers a broad range of styles and fits a variety of body types. Tailored to offer superior levels of comfort while providing distinct styling. Typically paired with pleated pants but can be worn with flat front pants as well.

- Standard Lapel
- Fuller Chest
- Higher Button Stance
- Standard Length



### MODERN FIT

Wanna Step it Up? Know how a tuxedo or suit should fit and the details that define your sense of style. You have many options when it comes to our Modern Fit collection. A modern fit will slightly taper to your body. The modern fit coat can be paired with flat front or pleated pants.

- Narrow Lapel
- Slightly Tapered
- Slightly Shorter Length
- Narrow through body



### SKINNY FIT

The most fitted look, a skinny fit is for the most fashion forward. A skinny fit will fit tight to your shoulders and be narrow through the torso. A skinny fit coat is paired with skinny flat front pants and should be measured for very little break.

- Slimmest Lapel
- Much Higher Armhole
- Very Narrow Sleeve
- Very Tapered Body
- Shortest Length

**Tuxedo Avenue**  
FORMAL WEAR  
WWW.TUXEDOAVENUE.COM



# Tuxedo Avenue

FORMAL  WEAR

WWW.TUXEDOAVENUE.COM

*Tuxedo Avenue is an authorized  
dealer of these brands:*



**KENNETH COLE**



**MICHAEL KORS**

